



GLASFLÜGEL
ING. E. HÄNLE
7311 SCHLATTSTALL

TECHNISCHE MITTEILUNG
TECHNICAL NOTE

Nr: 401-15 e

Reference: Sailplane model: Kestrel
German Data Sheet Nr. 276, all Serial Numbers.

Subject: Airbrake control

Reason: Excessive control forces

Urgency: None; subsequent modification optional

Method: The airbrake drive shaft according to drawing No. 401-56-3 is replaced by the shaft according to drawing No. 401-56-20 with a lever arm enlarged from 91 to 100 mm.

Material: According to drawing

Center of gravity: No change

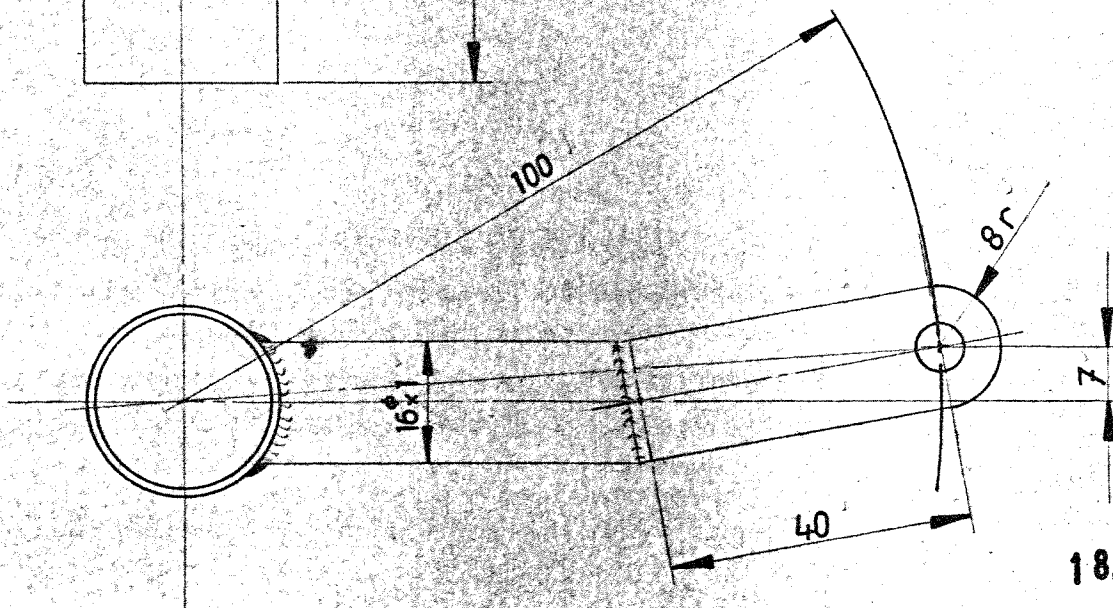
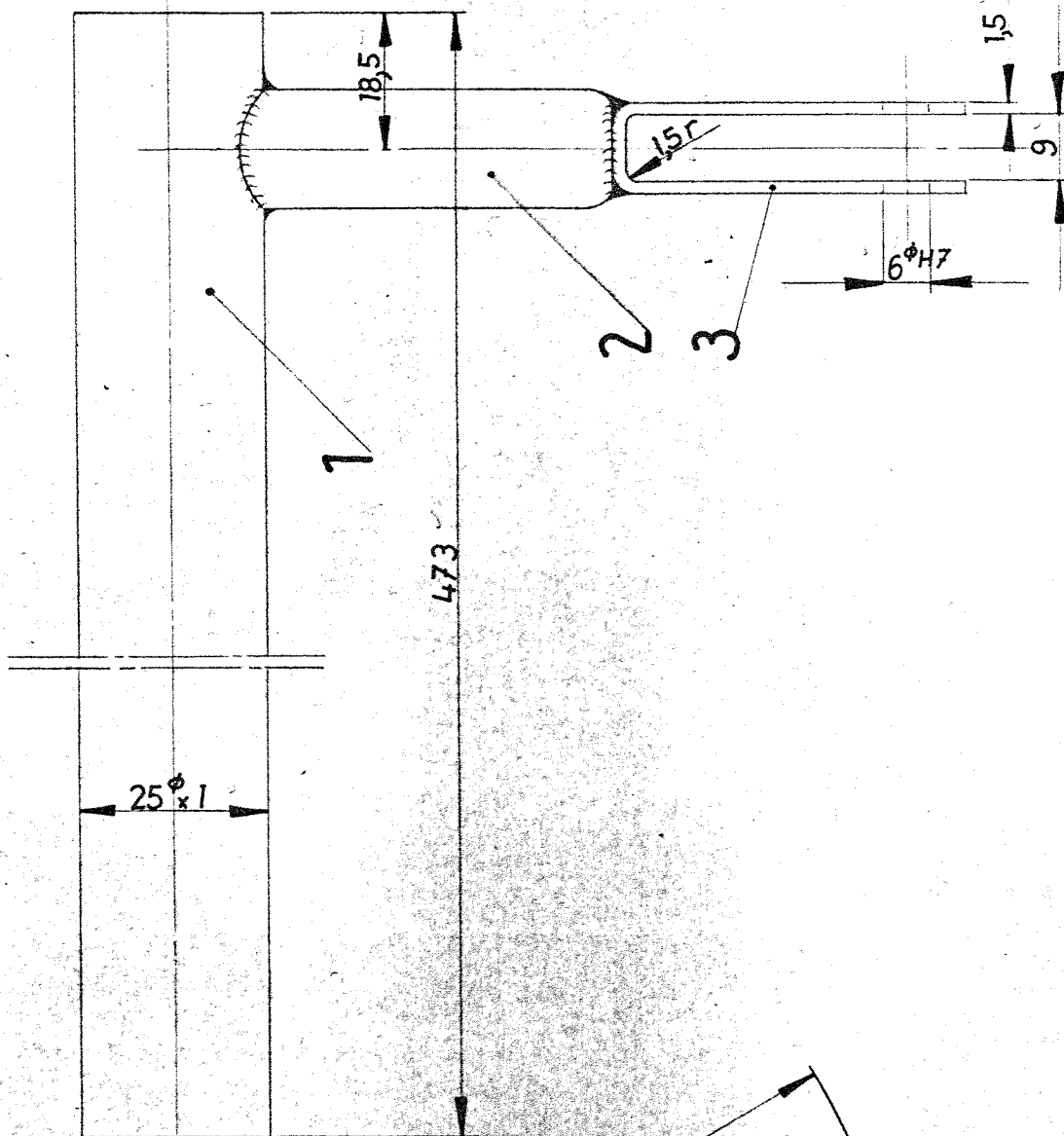
Weight: No change

Remarks: This Technical Note is Standard from Works-No. 96 and on.

Supply: Glasflügel, D 7311 Schlattstall.

GLASFLÜGEL SCHLATTSTALL
August 28th, 1974

(Hänle)



18. Sep. 1974

Im WG-Verfahren mit Zusatzwerkstoff 1.7734.2 geschweißt. Grundiert mit Wesh-Primer 42002 + Härter 40018. Decklackierung mit Nitro-Lack grau RAL 7003.

3 (1x) U-Blech 1.7734.4 106x 16x 1,5
 2 (1x) Rohr 1.7734.4 16φ x 1 x 50,5
 1 (1x) Rohr St 35Bk 25φ x 1 x 473



1:1

BK-Antriebswelle

401-56-20

7. 9. 73

Hu.