

Subject: Ruddercontrol

Effectivity: Model "Club Libelle", German Type Certificate No. 304 from Ser.No. 170 and up.
Model "Hornet", German Type Certificate No. 304 from Ser.No. 78 and up.

Urgency: None, optional

Reason: For improved handling in flight the rudder pedal travel is reduced.

Actions: Shortening of the rudder drive from 100mm to 85mm according to drawing No. 303-45-3.

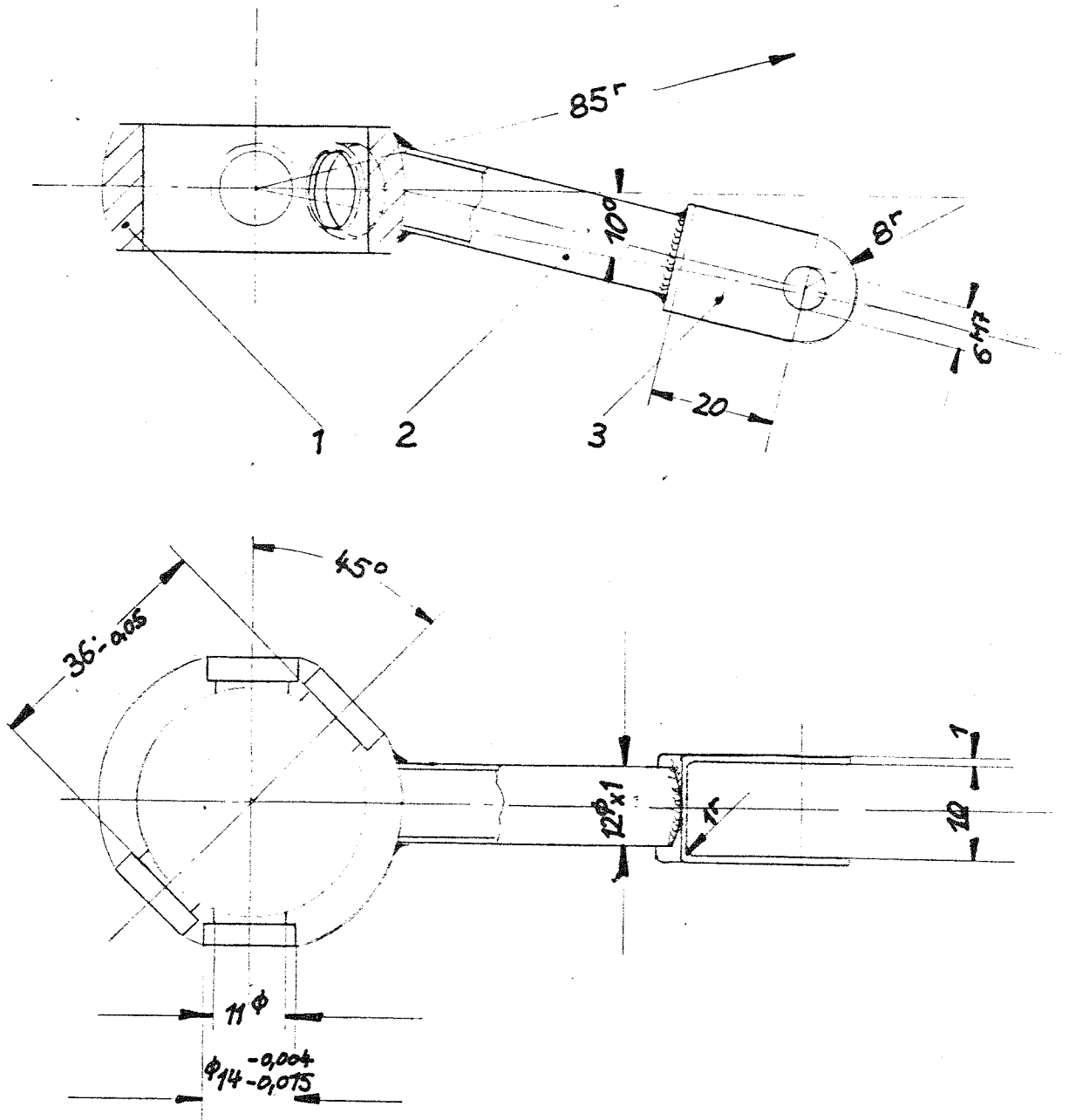
Material: s. drawing No. 303-45-3.

Weight and balance: Not affected.

Remarks: Only for manufacturing.

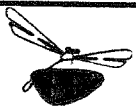
Lenningen/Württ. 1
1. November 1976

(Signed: Schott)



Im WIG-Verfahren mit Zusatzwerkstoff 1.7214.2 geschweißt. Grundlast nach DIN EN ISO 40018. Dichtführung mit Nitro-Lock grau RAL 7005

- 3 (1x) U-Blech 1.7214.4 16x1x71
 2 (1x) Rohr 1.7214.9 12 ϕ x1x50
 1 (1x) Anschweißring. Zchnng.Nr. 203-45-1



1:1

Antriebslenker für SR.

303-45-3

3.12.76

Schott