

Subject: Elevator Linkage at the base of the stick

Affected: Glider-Model: Standard Libelle  
Standard Libelle 201 B

Works Nos. 1-476

Reason: Failure of a Linkage

Urgency: Action 1: Before next flight  
Action 2: Until November 1st 1980

Action 1: The Elevator Linkage at the base of the stick (see modified drawing No. 301-41-4/2) must be inspected carefully by means of a magnifying glass (magnification at least 5x) for possible cracks near the welded seam. This inspection must be made immediately and again following the application of high loads to the glider (e.g. hard Landing or ground loops). If cracks are found the glider must not be flown until the defective part has been replaced.

Action 2: The Elevator Linkage at the base of the stick must be replaced by a modified part in accordance with drawing No. 301-41-4/2. Replacement must in all cases be effected until November 1st 1980.

Material: See drawing No. 301-41-4/2

Weight: No change

Center of Gravity: No change

Remarks: The modified Elevator Linkage according to drawing No. 301-41-4/2 is available from

**Hansjörg Streifeneder**

Glasfaser-Flugzeug-Service GmbH

LTB II-A 95 u. I-C 12

Hofener Weg, Tel. 07382/1032

72582

~~7431 Grabenstetten~~

Action 1 (visual inspection) must be carried out by a suitably experienced person, and the logbook annotated accordingly.

Action 2 (replacement of Linkage) must be inspected and certified by a licensed inspector.



0981 1100 '80

Lenningen, den 29.07.1980

*Schmaljohann*

*Martin Hausen*

**Hansjörg Streifeneder**

Glasfaser-Flugzeug-Service

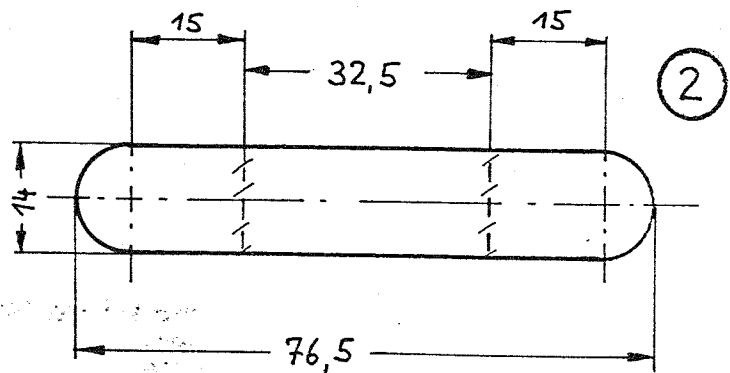
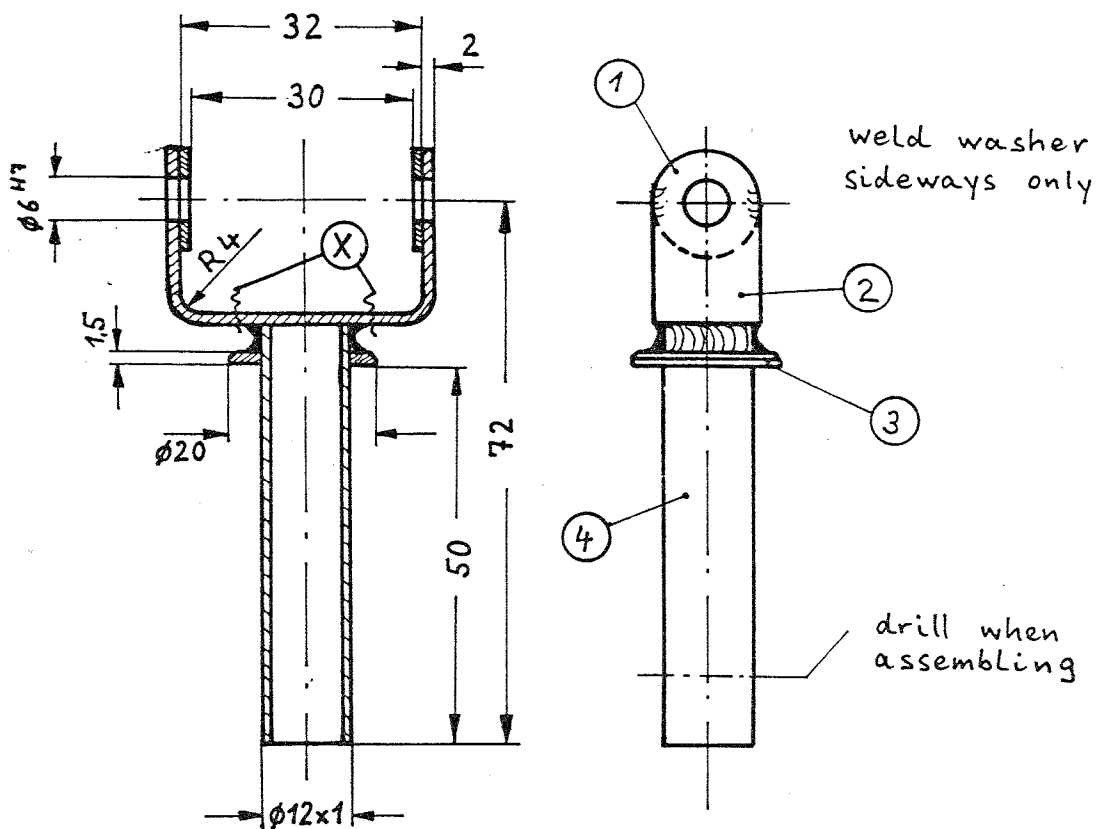
LTB II-A 95 u. I-C 12

Hofener Weg, Tel. 07382/1032

Repair station in charge  
of Glasflügel sailplanes

72582 ~~7431~~ Grabenstetten

(X) Position of possible cracks on original Elevator Linkage



- ① washer (2x) St  $\varnothing 14 \times \varnothing 5,5 \times 1$
- ② frame 1.7734.4 76,5 x 14 x 2
- ③ washer St  $\varnothing 20 \times \varnothing 12 \times 1,5$
- ④ tube 1.7734.4  $\varnothing 12 \times 1 \times 56$

heat-treatment after welding: Tempering in controlled atmosphere  
1 hour at 550°C



M 1:1

Elevator Linkage

301-41-4/2

29.07.80

Hansen