

Reference: Sailplane Type: Standard Libelle  
Standard Libelle 201B  
German Data Sheet No. 251,  
U.S. Type Certificate G12EU, Data Sheet  
revision 4 dated February 5th 1973,  
Serial-No. 1-392 and 398.

Subject: Reinforcement of rudder yoke stops

Reason: Due to constant impact by the adjustment  
screws of the rudder yoke, its stops on  
the wheel well were damaged.

Urgency: Method 1 before next flight  
Method 2 before next annual inspection

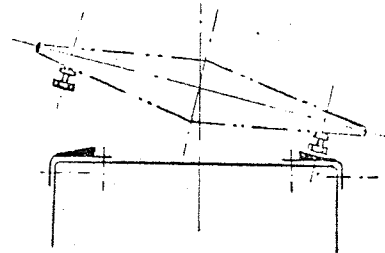
Method: 1. The rudder yoke stops on the wheel well  
have to be checked. If damage is found,  
method 2 is applicable.  
2. The reinforcement parts, delivered by  
Glasflügel, have to be fitted as  
described below.

Material: 2 FRP reinforcement angles, 8 self tapping  
screws, glue "UHU PLUS" or epoxy resin  
(Epikote 162 & Laromin C 260) thickened  
with cotton flocks.

Weight: No change

C/G: No change

Remarks: Sand bonding areas using 120 grade sand  
paper. Glue FRP angles to wheel well so  
that the flat screw heads of the rudder  
yoke meet the angles with their full area.  
Fasten each FRP angle with additional 4 self  
tapping screws to the wheel well.  
Check rudder deflection of  $25^{\circ}$  ( $\pm 1^{\circ}$ ) on  
both sides by adjusting rudder yoke screws.



Supply:

GLASFLÜGEL

GLASFLÜGEL  
Ing. E. Hänle  
7311 Schlattstall

den 21. Mai 1973

i.A. Renner