

englische Version von Nr. 401 - 7.

TECHNICAL INFORMATION

Effectivity : Sailplane Type KESTREL.  
Sailplane Data Sheet (german) No. 276.  
All worksnumbers.

Subject : Flap - drive superimposed to the ailerons.

Reason : Improved rate of roll.

Urgency : By choice.

Mode of Acting : With a changed control kinematic the flaps  
are used simultaneous with the ailerons.  
The revised setting datas according dra-  
wing No. 401 - 1 - 5 have to be stated on  
the data sheet of the flight - and service  
manual.  
Used construction drawings are :  
401 - 47 - 9 and  
401 - 48 - 75.77

Material : See drawinglist.

Weight : Increase of approx. 1 kp in center of  
gravity.

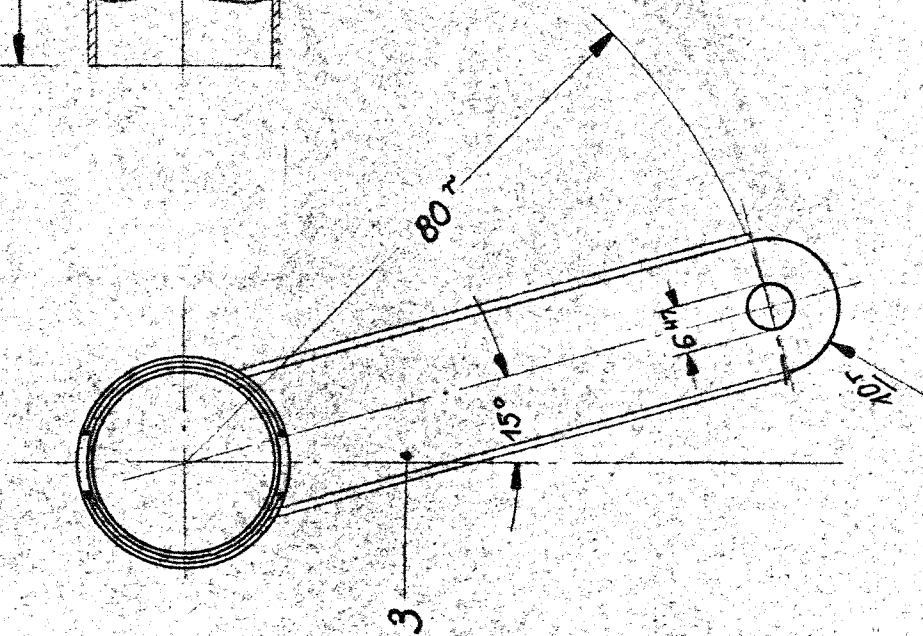
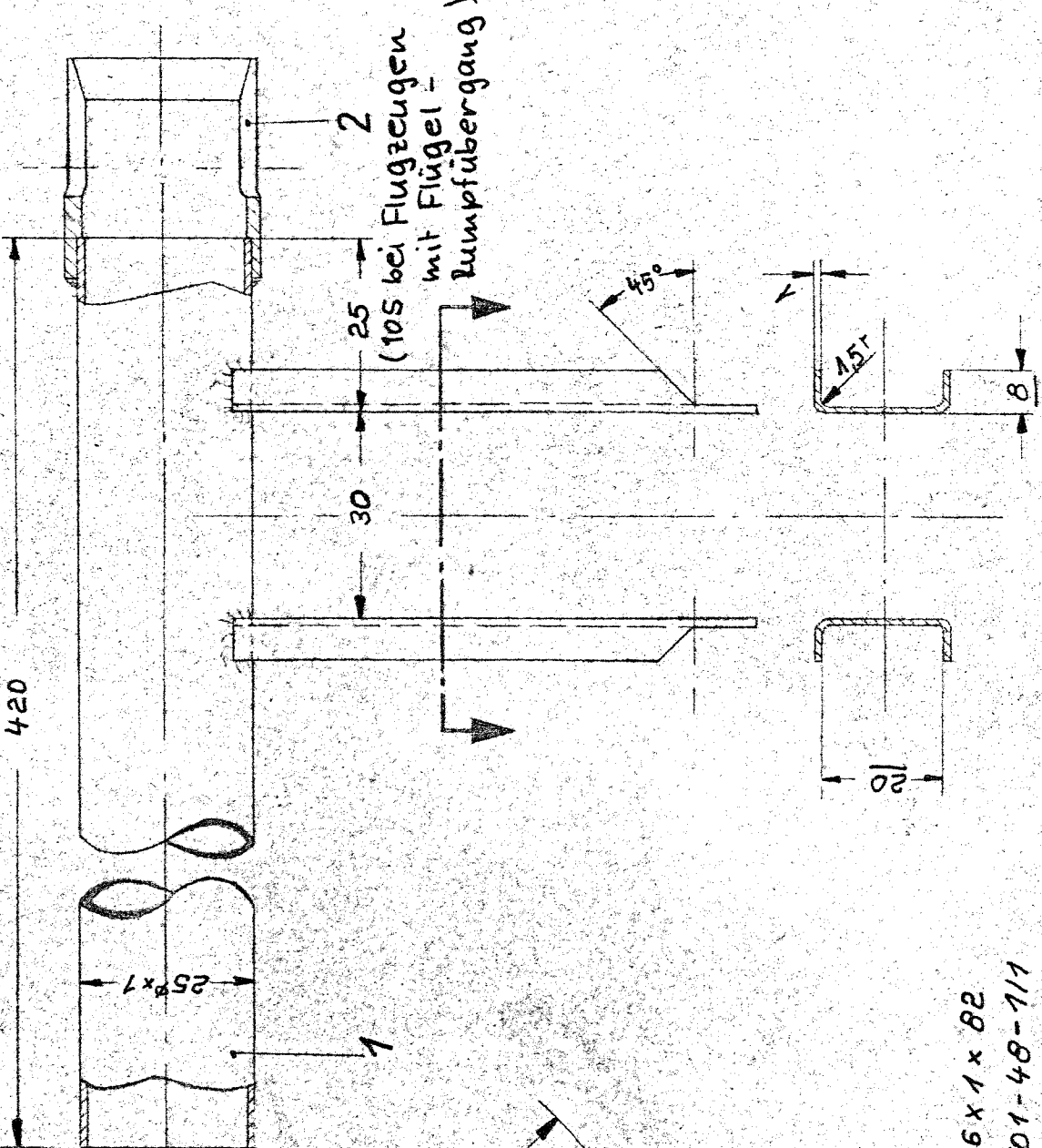
Center of gravity: No change.

Remarks : In production from worksnumber 26.

September 2nd, 1970.

Hänle

(580 für Flugzeuge mit Flügel - Stumpfübergang)



- 3 (2x) U-Blech 1.7214.4 36 x 1 x 82
- 2 (1x) Stechhülse Zchnng. Nr. 501-48-1/1
- 1 (1x) Rohr 1.7214.9 25ø x 1 x 420



1.9.11.70



M 1:1 WK - Antriebswelle

401-48-4

6.3.1968  
Streifenacke