

Subject: Elevator Linkage at the base of the stick

Affected: Glider-Model: H 301
H 301 B

Reason: All Works Nos.
Failure of a Linkage

Urgency: Action 1: Before next flight
Action 2: Until November 1st 1980

Action 1: The Elevator Linkage at the base of the stick (see modified drawing No. 301-41-4/2) must be inspected carefully by means of a magnifying glass (magnification at least 5x) for possible cracks near the welded seam. This inspection must be made immediately and again following the application of high loads to the glider (e.g. hard landing or ground loops). If cracks are found the glider must not be flown until the defective part has been replaced.

Action 2: The Elevator Linkage at the base of the stick must be replaced by a modified part in accordance with drawing No. 301-41-4/2 Replacement must in all cases be effected until November 1st 1980.

Material: See drawing No. 301-41-4/2

Weight: No change

Center of Gravity: No change

Remarks: The modified Elevator Linkage according to drawing No. 301-41-4/2 is available from
Glasflügel
7318 Lenningen 1
West Germany

Action 1 (visual inspection) must be carried out by a suitably experienced person, and the logbook annotated accordingly.

Action 2 (replacement of Linkage) must be inspected and certified by a licensed inspector.



03. Sep. 1980

Lenningen, den 29.07.1980

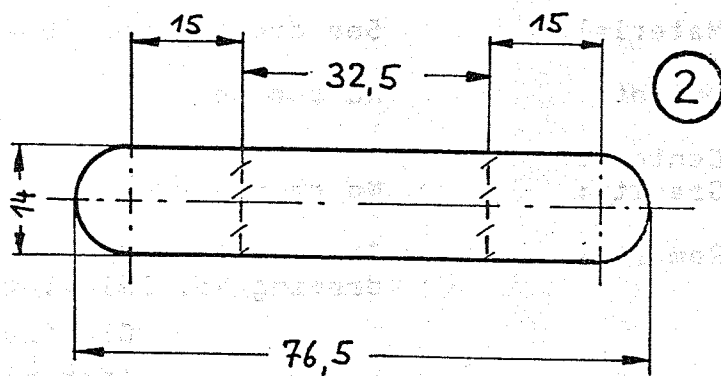
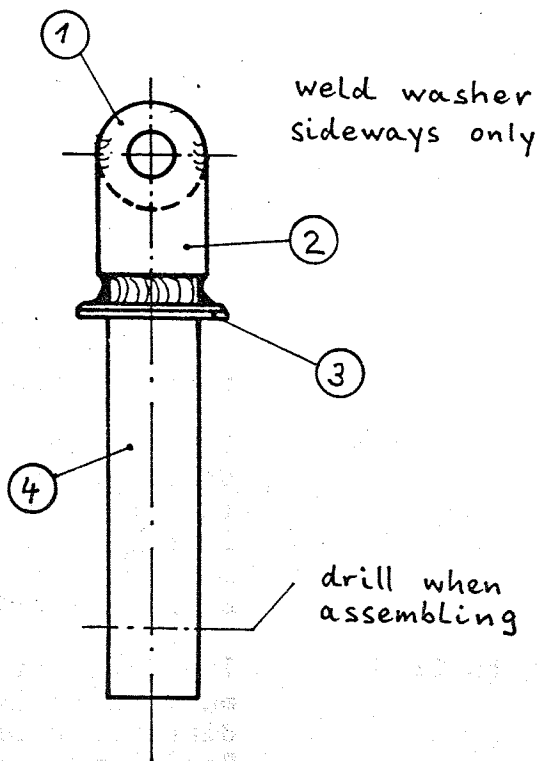
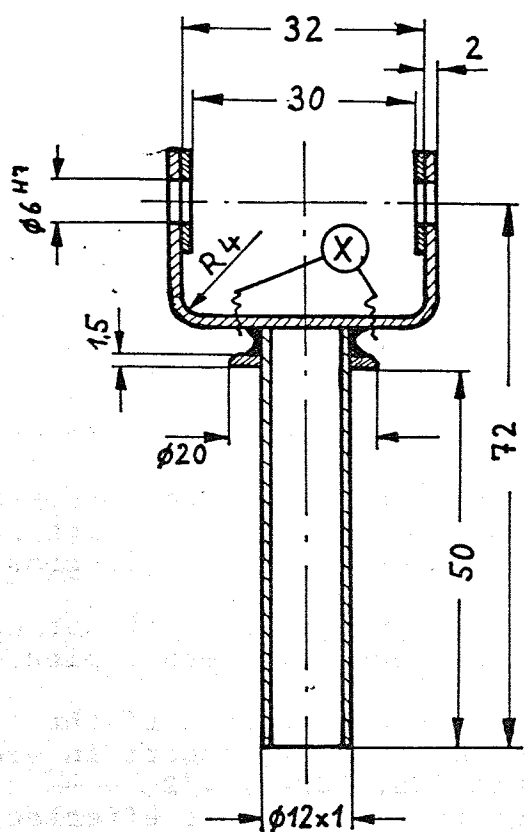
Schmaljohann

Martin Hansen

Hansjörg Streifeneder
Glasfaser-Flugzeug-Service
LTB II-A 95 u. I-C 12
Hofener Weg, Tel. 07382/1032
7431 Grabenstetten

Repair station in charge
of Glasflügel sailplanes

(X) Position of possible cracks on original Elevator Linkage



- ① washer (2x) St $\varnothing 14 \times \varnothing 5,5 \times 1$
- ② frame 1.7734.4 76,5 x 14 x 2
- ③ washer St $\varnothing 20 \times \varnothing 12 \times 1,5$
- ④ tube 1.7734.4 $\varnothing 12 \times 1 \times 56$

heat-treatment after welding: Tempering in controlled atmosphere
1 hour at 550°C



M 1:1

Elevator Linkage

301-41-4/2

29.07.80

Hansen