

Von FAA nicht zugelassen

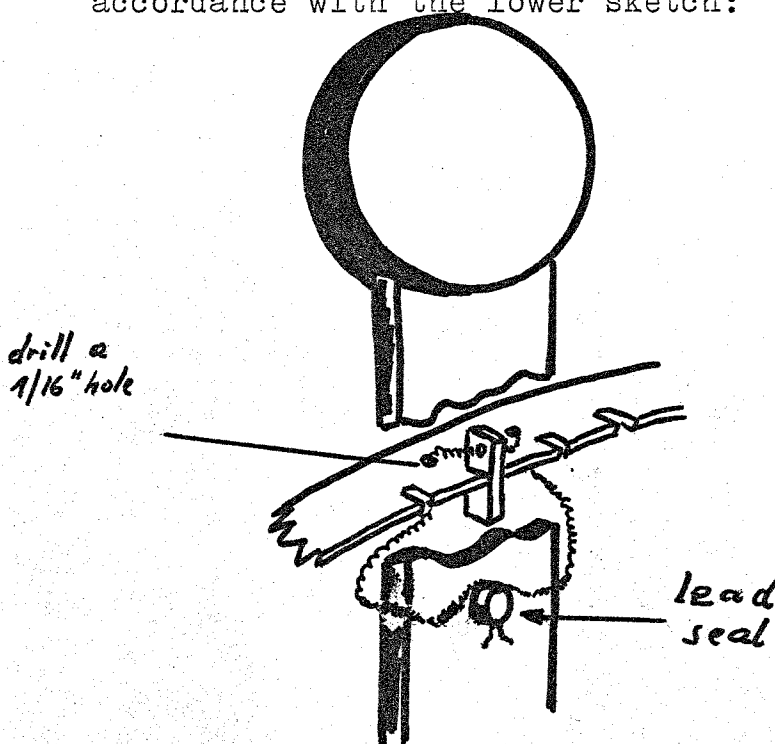


GLASFLÜGEL
ING. E. HÄNLE
7311 SCHLATTSTALL

TECHNISCHE MITTEILUNG TECHNICAL NOTE

Nr: 301-28 e

- UNITS AFFECTED : All gliders model "H301 & H301B Libelle"
German Data Sheet No.251, U.S.ATC No.G12EU.
- SUBJECT : Flap mechanism seal for Standard Class Contests.
- REASON : For a participation of gliders model "H301 or
H301B Libelle" in U.S.Standard Class Contests
it was suggested to seal the flap lever in
order to prevent operation of flaps .
- PROCEDURE : 1.)The pilot may determine what the flap
setting throughout the contest is to be,
however, only the flap lever setting 0,
+1 or +2 is permitted to be sealed in
accordance with the lower sketch:



2.)In case, that a change of the flap setting is necessary, the break forces on the flap lever should not exceed 8 kp, therefore the correct seal wire must be used.

3.)The following cockpit placard must be installed in view of the pilot:

OPERATION OF THIS GLIDER IN U.S.STANDARD CLASS CONTESTS IS PERMITTED IF FLAP LEVER IS SEALED. SEAL WILL BREAK IF LEVER IS USED. DO NOT EXCEED MAX.PERMITTED SPEED SHOWN ON FLAP INDICATOR PLATE.

GLASFLÜGEL, ING. EUGEN HÄNLE
7311-SCHLATTSTALL/WÜRTTBG.
FED.REP.OF GERMANY
Tel. 07026/855

June 1st 1971

