



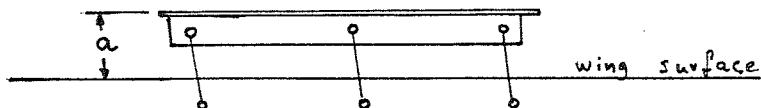
Reference: Sailplane model: Standard Libelle
Standard Libelle 201 B
German Data Sheet No. 251, from Serial No. 95 and on.

Subject: Airbrake control

Reason: Excessive control forces

Urgency: None; subsequent modification optional

Method: The Airbrake drive shaft according to drawing No. 301-49-1/2 is replaced by the shaft according to drawing No. 201-49-2 with a lever arm enlarged from 50 to 65 mm.
The dimension "a" as shown below must be at least 108 mm.



Material: According to drawing

Center of Gravity: No change

Weight: No change

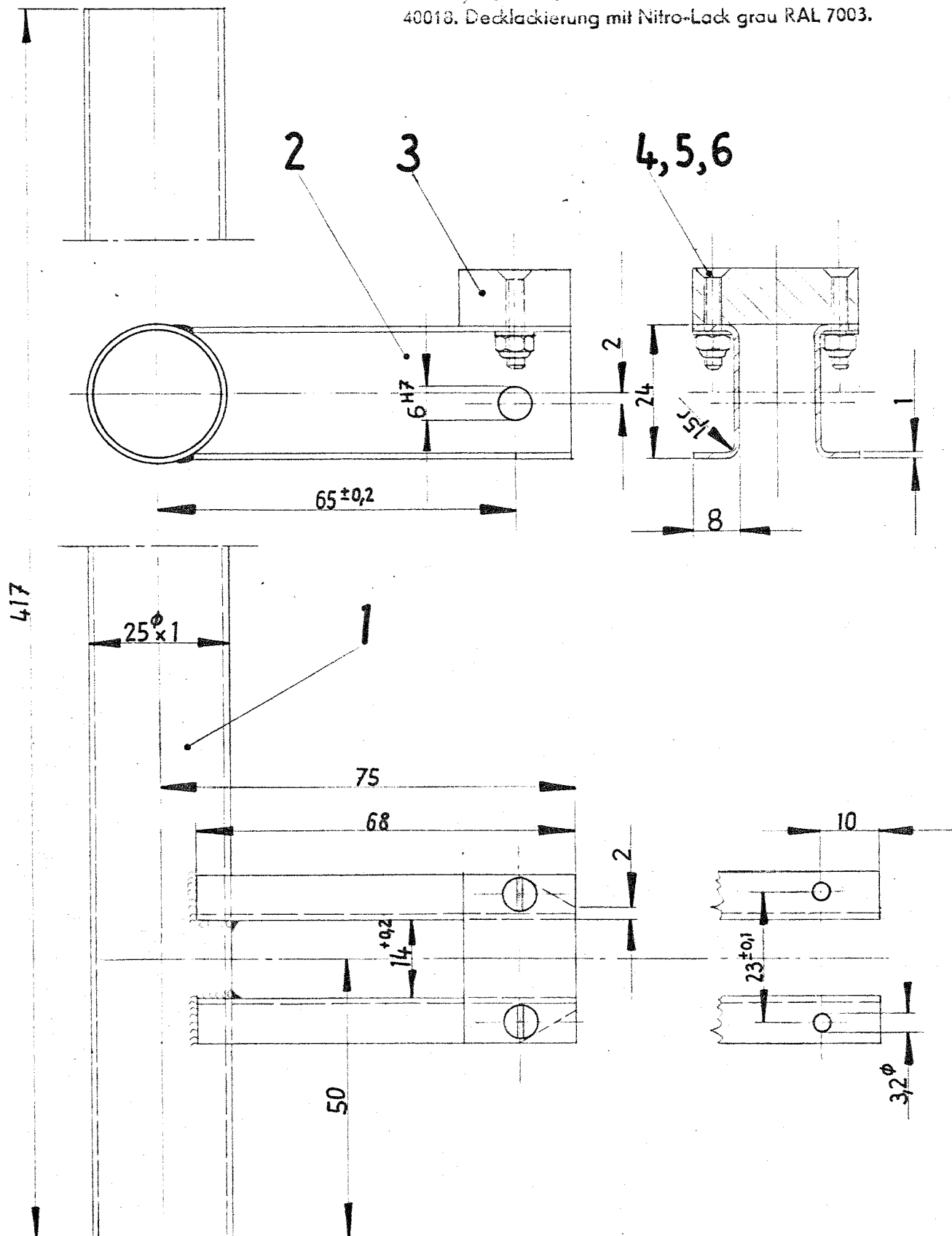
Remarks: This Technical Note is standard from Works No. 521 and on.

Supply: Glasflügel, D 7311 Schlattstall.

GLASFLÜGEL SCHLATTSTALL
August 28th, 1974

(Hänle)

Im WIG-Verfahren mit Zusatzwerkstoff 1.7734.2 geschweißt. Grundiert mit Wash-Primer 42002 + Härter 40018. Decklackierung mit Nitro-Lack grau RAL 7003.



417

18. Sep. 1974



Ab W.Nr. 521

J. M. D.

- | | | |
|--------|-----------------|----------------------|
| 6 (2x) | Sechskantmutter | M3 DIN 985 |
| 5 (2x) | U-Scheibe | 3,2 DIN 125 |
| 4 (2x) | Senkschraube | A M3x18 DIN63 |
| 3 (1x) | Polyamidstück | Zchnng. Nr. 201-49-3 |
| 2 (2x) | Blech 1.7734.4 | 36x68x1 |
| 1 (1x) | Rohr St 35 Bk | 25φx1x417 |



1:1

BK-Antriebswelle

201-49-2

21. 3. 74

HU.